

# COLOMBIAN SCHOOL FEEDING PROGRAM



## 1. Quick facts about the Country

- Colombia is a democratic republic, independent from Spain since 1819.
- It is located in the northwestern corner of South America. It occupies an area of 446,000 sq. mi. (over 1 million square kilometers), approximately the size of Texas and California combined. We have the privilege to be the only South American nation to border both the Caribbean (one thousand miles of coastline) and the Pacific Ocean (six hundred miles).
- Colombia has three mountain chains of the Andes (named "cordilleras") that divide the country into five main geographical regions:
  - a) The **Andean Region**, where most of the population (70%) is concentrated, spans from the south to the northeast along the Andes Mountains. This mountainous terrain makes internal transportation costly and slows physical and social integration.
  - b) The **Caribbean Region**, to the north, features very warm climate year-round, beautiful beaches, and Colombia's most festive people.
  - c) The **Pacific Region**, to the west, is covered by tropical rain forests and exuberant vegetation.
  - d) The **Eastern Plains Region** is a mainly agricultural area, and one of the richest in the country after the discovery of oil fields.
  - e) And the **Amazon Region**, to the Southeast, covered by dense tropical rain forests and jungles.
- The country is politically divided into 32 departments (some English translations use the word "*provinces*", others use "*state*" for our word "departamentos") and 1 capital district (distrito capital): Bogotá.
- We are a tropical country with a variety of climates, but no seasons. Rainy and dry periods alternate throughout the year and temperatures are determined basically by altitude above sea level. And a country plenty of natural resources. We produce the richest coffee in the world; we are the major world source of emeralds; the second flower exporter in the world (after the Netherlands), and the main U.S. supplier; an important exporter of bananas and exotic fruits; we have the biggest export-oriented steam coal mine in the world, producing 15 million metric tons of coal per year; abundant oil and natural gas reserves and an important producer of platinum, gold and silver; and has an important industry. However socio-economic differences are extremely high.
- Due to the violence (guerrillas and paramilitaries), only about one-quarter of the population lives in rural areas. Only 50 years ago were more than 60%. Now, a great part of the rural population are displaced people, living in the cities under poverty line. A great number of them are children.
- Our total population is 44.5 million (2003 estimate) with a growth rate of 1.85%. Major cities include Bogotá (the capital, with over 7 millions people), Cali, Cartagena, Medellín and Barranquilla (cities with more than 2 millions people).



- Ethnic groups include mestizo (58%), white (20%), mulatto (14%), black (4%), mixed black-Amerindian (3%), and Amerindian (1%). 11'325.693 are children among 5-17 years old.
- Today, approximately 8 million Colombians have incomes below a nutritionally-defined subsistence level. The incidence of extreme poverty rose to over 20 percent. In the countryside has risen over 60%.
- Unemployment has affected most Colombians, the poor, and in particular women and young people. The poorest quintile of the population has an unemployment level of 25 percent, more than 3 times higher than that affecting the top quintile (7 percent).
- The rate of unemployment among the youth between 15-19 years old is 44.3% and among women 23.2%. 1.567.847 children among 5-17 years old (14%) are working.



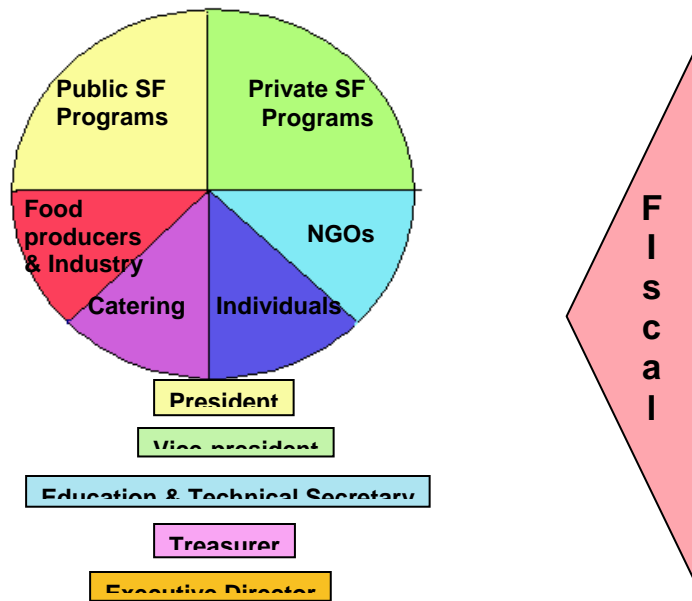
## 2. Colombian history on School Feeding

- We have a long history in School Feeding. Formally, since the Act 319 of 1941. However we don't cover until now all school children (only about 33.6%).
- We have a complex School Feeding System, formed by national, regional and public operators and also by private NGOs. The major operator is the **Colombian Institute of Familiar Welfare (ICBF)**, in charged of the politic on SFP since 1968 and financed with national own resources (3% of total nations salaries). Actually the ICBF assigns about US \$65.3 millions for School Feeding.
- Since the realization of the **Latin American Encounter of Ministers of Education** (Medellin, 1999) and as a form for improving the School Feeding, we proposed the creation of the Latin American School Feeding Network and of national organizations on school feeding in each country.
- Since them, we did different steps. One of them was the obtaining of the Act 715 of 2001 that dedicates 5% of the special resources of education to local school feeding projects. With this measure all 1,098 municipalities have national resources for School Feeding (about US \$ 51 additional millions).
- In 2003 we built the **Colombian School Feeding Association**, a private organization with the goal of uniting all stakeholders (public and private) to extend to all children the school feeding program and to improve the quality of the services.
- Our main activities are the organization of:
  - National Conferences (2003 and 2004);
  - National exhibits (ALIMENTEC, 2004);
  - An annual Training Plan (workshop on Design and Management of SF projects; and Monitoring and Evaluation);
  - a Communication Plan (News Bulletin "Coalimentes informa"; and a Web Site [www.coalimentes.com](http://www.coalimentes.com)); and
  - Design of Projects of Cooperation (for financing of non food items and infrastructure)



- The walk against hunger (2005)

### Structure of the Association:



### 3. Some data on Colombian School Feeding Program

#### Funds

One of the problem we are facing is that we don't have a good statistical system in School Feeding. We are specially weak in information of private sector. Due to these restrictions, we estimate that in 2005 we are investing about US \$234.5 millions, distributed as follow:

- A. Resources of Public Sector: US \$126.5 millions
  - Resources of ICBF: US \$ 65.3 millions (data of 2004):
    - \* Pre-school children (under 5 years): US\$11.9 million
    - \* School children (5-15 years): US\$53.4 million
  - Resources of Act 715/2001: US \$51 million- Other Resources (Regional and local Governments and oil transferences: US\$10.2 millions
- B. Resources of Private and International Sectors: US \$108 (estimated)
  - Resources of Private school canteens: US\$100 million (estimated)
  - Resources of NGOs: US\$ 8 million (estimated)

#### Beneficiaries 2005:

According with the available information, we are serving around 3.8 millions children, distributed as follow:

- In Public Sector: 2.841.115 Children
  - \* Pre-school children (under 5 years): 322.052 children
  - \* School children (5-15 years): 2.519.063 children
- In Private Sector: 1.000.000 children (estimated)

**Public School Feeding Guidelines:**

- Focus on the poorest: social strata 1, 2 and 3; rural areas, ethnic groups and displaced populations
- Primary public schools
- Minimum of yearly services: 165 schooldays
- Two services daily recommended
- All meals are free
- Service to all children of the selected schools
- Few operators (we tend to one local or regional operator)
- A Local Social Board control all services
- A common fund (with all different resources)

**Daily Ratio per Child (Guidelines)**

<b>Services (Daily ratio per Child)</b>	<b>Contribution of nutritional daily requirements</b>
Breakfast + snack	27.5%
Snack + lunch	37.5%
Breakfast + lunch	50%
Breakfast + snack + lunch	57%
Mid morning snack + afternoon snack	15%

**Angel H. Facundo Díaz, Ph.D.**  
**Executive Director**  
**Colombian School Feeding Association**  
[a\\_facundo@epm.net.co](mailto:a_facundo@epm.net.co)  
[direjecutivo@coalimentos.com](mailto:direjecutivo@coalimentos.com)